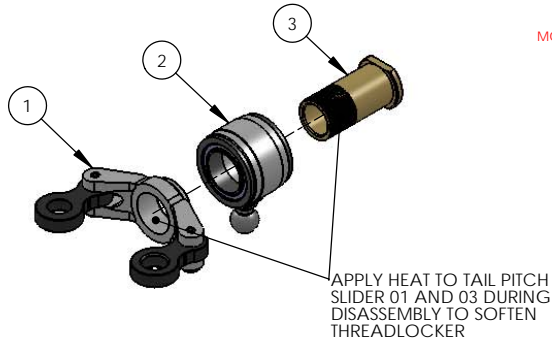


# GOBLIN630/700/770 SERIES PERFORMANCE TAIL CONTROL UPGRADE V2 SG630/700/770-PTC-V2 (AL 6061-T6)

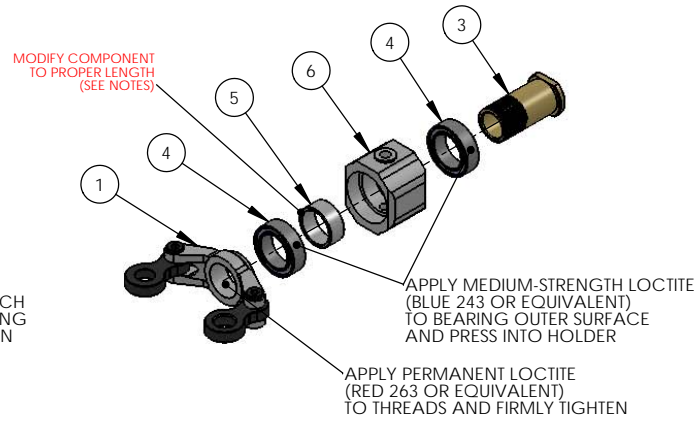
## STEP 1

### DISASSEMBLE STOCK SAB TAIL PITCH SLIDER ASSEMBLY



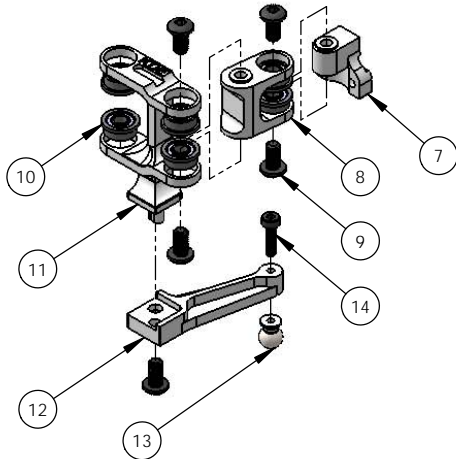
## STEP 2: ASSEMBLY A

### ASSEMBLE PERFORMANCE TAIL PITCH ASSEMBLY



## STEP 3: ASSEMBLY B

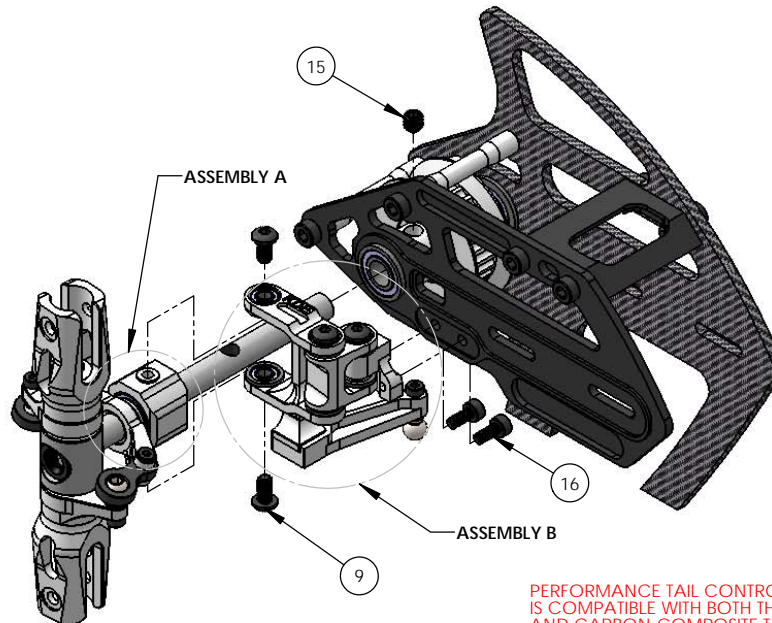
### ASSEMBLE PERFORMANCE TAIL CONTROL V2 MECHANICS



APPLY MEDIUM-STRENGTH LOCTITE (BLUE 243 OR EQUIVALENT) TO ALL BEARING OUTER SURFACES AND INSTALL INTO CORRESPONDING BEARING BORES

## STEP 4

### ASSEMBLE INTO GOBLIN SERIES TAIL SYSTEM



PERFORMANCE TAIL CONTROL V2 IS COMPATIBLE WITH BOTH THE ALUMINUM AND CARBON-COMPOSITE TAIL SIDE PLATE (COMPETITION AND STANDARD EDITION)

ITEM NO.	DESCRIPTION	QTY.
1	SAB GOBLIN 630/700/770 SERIES TAIL PITCH SLIDER 01 (INCLUDED IN ORIGINAL KIT)	1
2	SAB GOBLIN 630/700/770 SERIES TAIL PITCH SLIDER 02 (INCLUDED IN ORIGINAL KIT)	1
3	SAB GOBLIN 630/700/770 SERIES TAIL PITCH SLIDER 03 (INCLUDED IN ORIGINAL KIT)	1
4	MR128ZZ RADIAL BALL BEARING	2
5	KDE DIRECT GOBLIN 630/700/770 SERIES PERFORMANCE TAIL CONTROL BEARING COLLAR	1
6	KDE DIRECT GOBLIN 630/700/770 SERIES PERFORMANCE TAIL CONTROL BEARING HOLDER	1
7	KDE DIRECT GOBLIN 630/700/770 SERIES PERFORMANCE TAIL CONTROL MOUNTING BOLT V2	1
8	KDE DIRECT GOBLIN 630/700/770 SERIES PERFORMANCE TAIL CONTROL SECONDARY LINK	1
9	M3 x 0.5 x 6MM BUTTON HEAD SOCKET HEAD CAP SCREW	7
10	F683ZZ FLANGED RADIAL BALL BEARING	6
11	KDE DIRECT GOBLIN 630/700/770 SERIES PERFORMANCE TAIL CONTROL PRIMARY LINK	1
12	KDE DIRECT GOBLIN 630/700/770 SERIES PERFORMANCE TAIL CONTROL ARM LEVER	1
13	SAB GOBLIN 630/700/770 SERIES UNIBALL M2 5H6 (INCLUDED IN ORIGINAL KIT)	1
14	M2 x 0.4 x 8MM SOCKET HEAD CAP SCREW (INCLUDED IN ORIGINAL KIT)	1
15	M4 x 0.7 x 6MM SOCKET HEAD SET SCREW CUP POINT (INCLUDED IN ORIGINAL KIT)	1
16	M2.5 x 0.45 x 6MM SOCKET HEAD CAP SCREW	2

**NOTE:** THE GOBLIN 630/700/770 PERFORMANCE TAIL CONTROL UPGRADE V2 PROVIDES THE ULTIMATE, SLOP-FREE CONTROL SYSTEM AVAILABLE ON THE MARKET TO PROVIDE PRECISE TAIL CONTROL AND AUTHORITY. DUE TO THE PRECISION CNC-MACHINING OF EACH COMPONENT, CORRECT INSTALLATION IS KEY FOR PROPER, BIND-FREE OPERATION. PLEASE PAY ATTENTION TO THE INSTRUCTIONS AND TAKE YOUR TIME WHEN INSTALLING THE ASSEMBLY. **MAKE SURE TO APPLY MEDIUM-STRENGTH LOCTITE (BLUE 243 OR EQUIVALENT) TO ALL SCREWS DURING ASSEMBLY.**

**STEP 1:** DISASSEMBLE THE STOCK SAB TAIL PITCH SLIDER ASSEMBLY TO REMOVE THE STOCK TAIL PITCH SLIDER 02. USING A HEAT-GUN, FLAME, OR ALTERNATE HEAT-SOURCE, APPLY HEAT TO THE THREADS HOLDING THE SLIDE SHAFT TO THE T-TYPE ARM. ONCE THE LOCTITE HAS SOFTENED AND RELEASED, UNSCREW THE SLIDE SHAFT FROM THE T-TYPE ARM AND SET ASIDE.

**STEP 2:** ASSEMBLE THE PERFORMANCE TAIL PITCH ASSEMBLY AS SHOWN IN THE DIAGRAM. APPLY MEDIUM-STRENGTH LOCTITE (BLUE 243 OR EQUIVALENT) TO THE OUTER SURFACE OF THE MR128ZZ RADIAL BALL BEARINGS AND PERMANENT LOCTITE (RED 263 OR EQUIVALENT) TO THE THREADS OF THE SLIDE SHAFT DURING INSTALLATION. **THE BEARING COLLAR HAS BEEN MACHINED SLIGHTLY-OVER-SIZED IN LENGTH TO ALLOW CUSTOMIZATION TO A PERFECT FIT. USING A FILE AND/OR SANDPAPER, MODIFY THE LENGTH OF THE COLLAR UNTIL A SLOP-FREE FIT IS PROVIDED BETWEEN ALL COMPONENTS. MAKE SURE NOT TO OVER-SHORTEN THE COLLAR, OR BINDING IN THE RADIAL BALL BEARINGS WILL OCCUR WHEN FULLY ASSEMBLED. FULLY-TIGHTEN THE ASSEMBLY WHEN FINISHED.**

**STEP 3:** ASSEMBLE THE PERFORMANCE TAIL CONTROL V2 MECHANICS AS SHOWN IN THE DIAGRAM. APPLY MEDIUM-STRENGTH LOCTITE (BLUE 243 OR EQUIVALENT) TO THE OUTER SURFACE OF THE F683ZZ FLANGED RADIAL BALL BEARINGS DURING INSTALLATION. INSTALL THE M3 BUTTON HEAD SOCKET HEAD CAP SCREWS AS SHOWN.

**LEAVE SCREWS LOOSELY INSTALLED UNTIL STEP 4.**

**STEP 4:** INSTALL BOTH ASSEMBLIES AND CHECK FOR SMOOTH OPERATION OF ALL COMPONENTS. PROCEED TO TIGHTEN ALL SCREWS TO COMPLETE INSTALLATION AND ENJOY THE NEW SLOP-FREE AND PRECISION-CONTROL TAIL SYSTEM.



www.KDEDirect.com  
SG630/700/770-PTC-V2